

Description

- DCR:** diffuser with adjustable cones
- adjustment with micrometric screw
 - removable central cones for easy assembly
 - made of aluminium with RAL 9010 finish
 - mounting height between 2.8 and 6 m

DCRQ: like DCR but with 596x596 panel

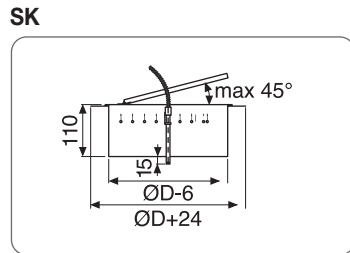
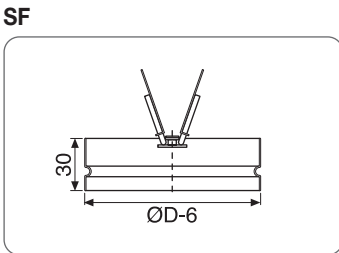
Accessories

- SF:** butterfly damper
- 2 blades up to 315 diameter (not for thermostatic actuators)
 - 4 blades for bigger diameters (not for thermostatic actuators)
- E:** equaliser
- SK:** deflector flap damper + equaliser (on request)
- KD:** plasterboard false ceiling fastening kit (list price €25)
- DCRQ-ATS / DCR-ATS:** thermostatic actuator

Special version

VR: coating according to RAL 9005 / 9006 table
fixed surcharge €30 + 20% per piece

Other RAL colours on request



All prices are list prices for local market, for a quotation please contact us.

Price list

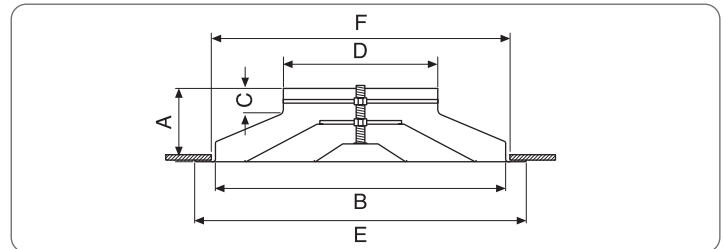
Type/DN	100	160	200	250	315	355	400	450	500	630
DCR	48	53	62	77	96	118	142	148	179	271
DCRQ	65	67	75	92	113	-	-	-	-	-
SF	17	20	21	24	29	37	51	62	66	133
DCR-ATS	-	148	160	180	240	-	-	-	-	-
DCRT-ATS	-	164	176	196	260	-	-	-	-	-
SK	OR	OR	OR	OR	OR	OR	OR	OR	OR	-

Delivery: - material with prices in bold in stock
- other material 2 weeks

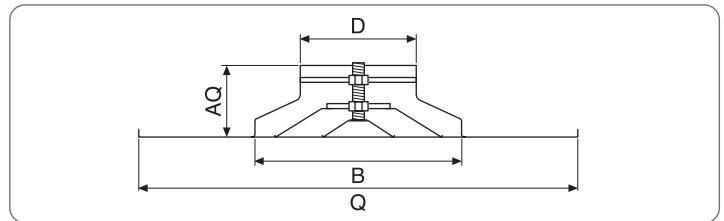
Dimensions

DN	100	160	200	250	315	355	400	450	500	630
D	98	158	198	248	313	353	398	448	498	628
B	194	280	360	445	560	640	680	735	805	943
E	230	335	423	517	640	730	776	825	917	1045
A	75	105	118	130	146	185	185	185	185	185
C	30	45	48	48	48	65	65	65	65	65
F	198	288	370	461	576	656	700	755	825	963
Q	596	596	596	596	596	-	-	-	-	-
AQ	70	100	110	120	126	-	-	-	-	-

DCR



DCRQ



Selection table for DCR and DCRQ with Vt = 0.25 m/s

AK (dm ²)	DN (mm)	Flow rate (m ³ /h)																									
		200		250		300		400		500		600		800		1000		1250		1500		1750		2000		2500	
1.5	160	25	1.4	30	1.7	36	2.1	45	2.8																		
		3.7	14.0	4.4	20	5.6	33	7.2	54																		
2.7	200			18	1.3	23	1.5	30	2.1	36	2.6	42	3.2														
				2.5	6.6	3	10	4	17	5	26	6	38														
4.0	250					15	1.3	22	1.7	27	2.1	33	2.6	41	3.5	50	4.5										
						2	4.2	2.7	7.7	3.4	12	4	17	5.6	33	7	52										
5.6	315							15	1.5	20	1.8	25	2.2	34	3	40	3.7	47	4.6								
						2.0	4.2	2.4	6	3	10	4	17	5	26	6.2	40										
7.4	355									20	1.9	25	2.6	34	3.3	42	4.1	47	5								
										2.3	5	3	9	3.8	16	4.8	23	5.5	32								
9.0	400											20	2.3	28	3.0	35	3.8	41	4.5								
												2.5	6.5	3	9	3.8	16	4.6	22								
1.1	450													22	2.7	26	3.3	35	4.0	40	4.8						
														2.5	6.5	3	9	3.8	16	4.4	20						
1.3	500															24	3.0	29	3.6	34	4.3	38	4.9	45	6		
														2.6	6.9	3.1	10	3.6	14	4.1	19	5	29				
1.9	630	NR	Lt															25	3.5	30	4.1	37	5.1				
		Vk	Pa															2.6	6.9	2.9	8	3.6	14				

The NR values do not take into account room attenuation

K factor for vertical throw

Δt(K)	-10	0	+10	+20	v _k	Δp _t	NR
L _t	x2	x1.15	x0.80	x0.50	x1.15	x1.30	+4

K factors for other Vt

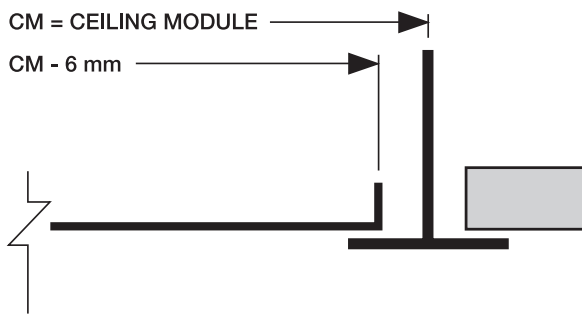
Vt	0.2	0.25	0.375	0.5
L _t	1.25	1	0.75	0.5

Profiles for false ceilings

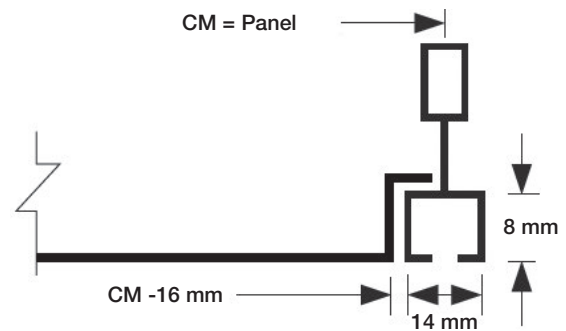
IT IS possible to produce some of our products with panel edges suitable for various types of false ceilings:

- DCRQ
- DEQ
- DQER/Q
- DMFQ
- DMUQ
- DQB4
- RSKP
- RSKO

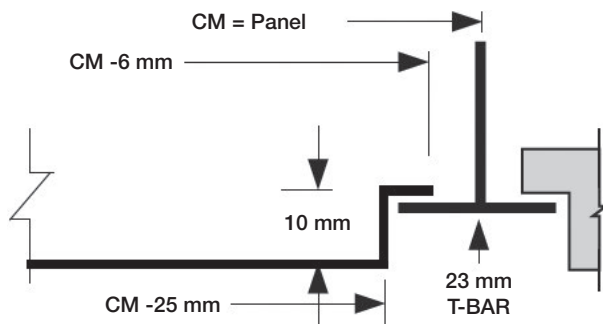
L: Installation recommended for inspection panel



F: Fineline



TL: tile (LAY-IN)



M (SNAP-IN)

