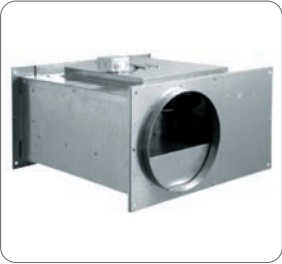


MBC



MBR



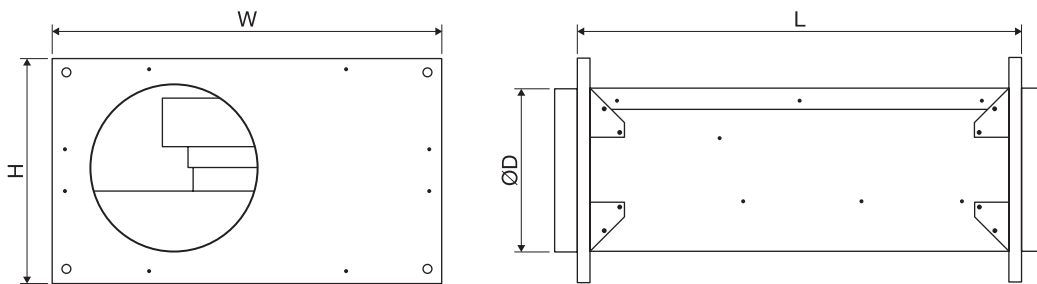
Description

- MBC:** inline centrifugal fans with circular inlets
- galvanised steel casing
 - backward inclined blade fan in galvanised steel
 - IP 44 / 54 motor with external rotor
 - adjustable motor

Description

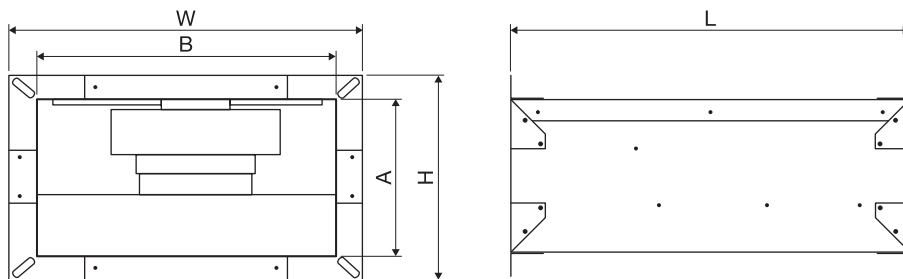
- MBR:** inline centrifugal fans with rectangular inlets
- galvanised steel casing
 - backward inclined blade fan in galvanised steel
 - IP 44 / 54 motor with external rotor
 - adjustable motor

Dimensions MBC



Model	Poles	Rpm	W	Amp.	Voltage	A	B	Ø D	H	L	W
MBC 100 2M	2	2600	60	0.30	M	203	270	100	-	350	-
MBC 125 2M	2	2600	106	0.50	M	224	400	125	-	400	-
MBC 160 2M	2	2600	135	0.60	M	240	400	160	-	400	-
MBC 200 2M	2	2650	135	0.60	M	200	400	200	264	533	444
MBC 250 2M	2	2600	155	0.70	M	250	500	250	314	533	544
MBC 315 2M	2	2700	225	1.00	M	300	500	315	364	562	544
MBC 315 4M	4	1300	270	1.20	M	300	600	315	364	642	644
MBC 350 4M	4	1290	640	3.10	M	350	600	350	475	717	644
MBC 400 4M	4	1390	1300	5.70	M	500	700	400	568	787	744

Dimensions MBR



Model	Poles	Rpm	W	Amp.	Voltage	A	B	H	L	W
MBR 2M 40x20	2	2650	135	0.60	M	200	400	264	533	444
MBR 2M 50x25	2	2600	155	0.70	M	250	500	314	533	544
MBR 2M 50x30	2	2700	225	1.00	M	300	500	364	562	544
MBR 4M 60x30	4	1300	270	1.20	M	300	600	364	645	644
MBR 4M 60x35	4	1290	640	3.10	M	400	600	475	717	644
MBR 4M 70x40	4	1390	1300	5.70	M	500	700	568	787	744
MBR 4T 60x35	4	1130	470	0.82	T	400	600	475	717	644
MBR 4T 70x40	4	1340	1150	2.10	T	400	700	568	787	744
MBR 4T 80x50	4	1300	1800	3.40	T	500	800	568	880	840
MBR 6T 70x40	6	910	390	0.81	T	500	700	568	787	744
MBR 6T 80x50	6	880	610	1.05	T	500	800	568	880	740
MBR 6T 100x50	6	910	1050	2.20	T	600	1000	640	980	1040

Selection table and price lists MBC

All prices are list prices for local market, for a quotation please contact us.

Model	Static pressure (Pa)										Noise	€
	0	50	100	150	200	250	300	400	500	600	LpA (dBA)	
	Flow rate (m ³ /h)											
MBC 100 2M	500	440	350	200	-	-	-	-	-	-	54	465
MBC 125 2M	500	440	350	200	-	-	-	-	-	-	54	465
MBC 160 2M	600	700	500	300	-	-	-	-	-	-	55	502
MBC 200 2M	-	-	950	900	790	600	450	-	-	-	62	811
MBC 250 2M	-	-	1100	1050	980	800	700	350	-	-	67	869
MBC 315 2M	1800	1700	1600	1550	1450	1300	1150	1000	700	450	71	972
MBC 315 4M	-	-	2900	2600	2400	2200	1800	700	-	-	67	1631
MBC 350 4M	-	-	3950	3700	3400	3100	2800	2150	800	-	79	1997
MBC 400 4M	-	-	7200	7000	6850	6400	5900	5300	4000	1300	87	3418

Noise level measured at 3 m

MBR

Model	Static pressure (Pa)										Noise	€
	0	50	100	150	200	250	300	400	500	600	LpA (dBA)	
	Flow rate (m ³ /h)											
MBR 2M 40x20	-	-	950	850	780	620	450	-	-	-	62	717
MBR 2M 50x25	-	-	1100	1050	980	850	770	530	180	-	67	861
MBR 2M 50x30	-	-	1600	1550	1450	1350	1300	1000	700	350	71	939
MBR 4M 60x30	-	-	2800	2600	2400	2150	1800	800	-	-	67	1421
MBR 4M 60x35	-	-	3950	3700	3550	3100	2800	2200	500	-	79	1907
MBR 4M 70x40	-	-	7300	6900	6600	6200	5800	5500	4000	1200	87	2994
MBR 4T 60x35	-	-	3500	3300	3000	2700	2300	1200	-	-	79	1956
MBR 4T 70x40	-	-	7000	6700	6500	5800	5400	4000	1000	-	87	3163
MBR 4T 80x50	-	-	10300	9700	9000	8300	7900	6400	2000	-	89	4048
MBR 6T 70x40	-	4700	4600	3600	2700	-	-	-	-	-	79	3389
MBR 6T 80x50	-	6700	6000	5000	4100	2700	-	-	-	-	82	3579
MBR 6T 100x50	-	10000	9300	8600	8000	7000	6000	2000	-	-	84	4897

Noise level measured at 3 m