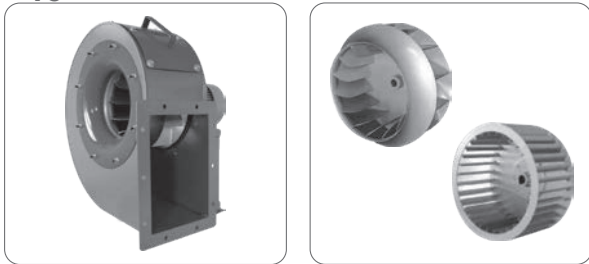


VC



Description

- VC-A:** centrifugal fan with forward inclined blades
- powder-coated carbon steel casing
 - 4/6/8 pole motors, three-phase 400/230/50 Hz
 - max fluid temperature 60°C
 - air flows between 500 and 20000 m³/h
 - useful static pressure between 250 - 800 Pa

- VC-R:** like VC-A but with backward inclined blades
- air flows between 500 and 200000 m³/h
 - useful static pressure between 250 - 2000 Pa

Prices on request

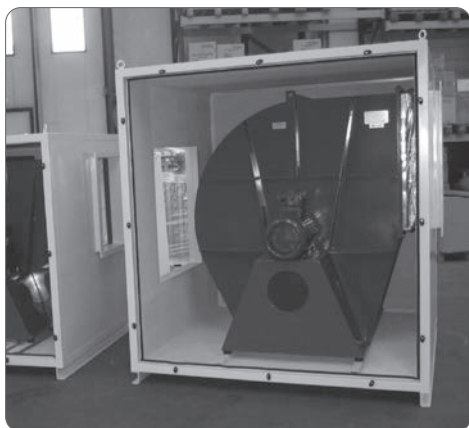
Accessories

- volume control / shut-off dampers
- gravity dampers
- flow regulation with inverter
- sound attenuators
- water or electric coils

Special executions

- ATEX execution:
 - ATEX 2 G Ex h – IIB T1....T4 Gb
 - ATEX 2 D Ex h – IIIB T450°C....T135°C Db
- corrosion proof execution (special coating or stainless steel)
- execution for high temperatures, max 400°C
- execution with dual motor
- afonic execution via cover box

Production examples



Centrifugal fan with afonic box



Centrifugal fan with afonic box, sound attenuator, inlet suction grilles with rainproof profile that can be opened for wall inspection G4 / G7 filter efficiency, multiple stages electric coil



Centrifugal fan with afonic box, sound attenuator and G4 efficiency filter wall



Centrifugal fan with afonic box, sound attenuator and G4 efficiency filter wall