

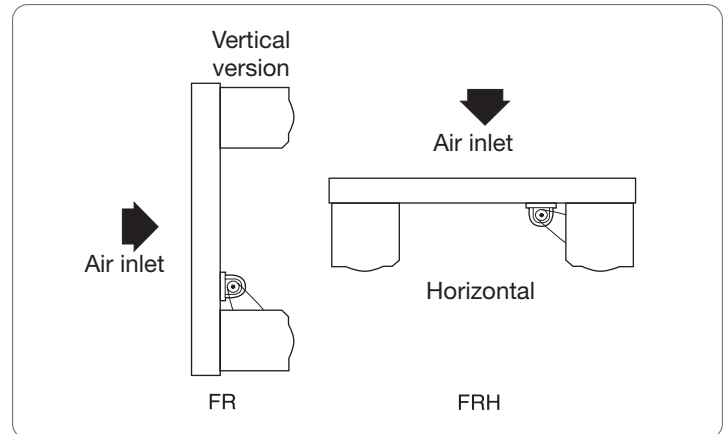
### Description

- FR:** rotary filter with automatic forward movement
- self-supporting frame in galvanised steel
  - EU3 impregnated fibreglass filter coil
  - coil length 20 m
  - three-phase gear motor 230/380/V 50 Hz
  - sealed control and alarm panel with low voltage control circuit
  - differential pressure gauge, operating range 30 Pa
  - working temperature -10°C / +80°C
  - micro limit switch
  - vertical assembly

**FRH:** like FR but for horizontal assembly

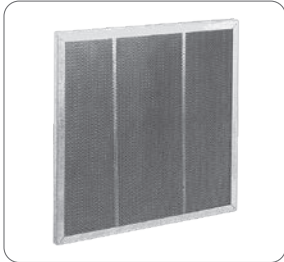
Prices and dimensions: on request

### Technical specifications

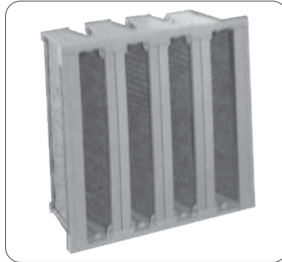


## Activated carbon flat panels

CCA



FCAD



### Description

- CCA23:** activated carbon flat panels
- galvanised steel frame th. 8/10
  - filtering material consisting of activated carbon granules contained in perforated sheet metal
  - finished filtering panel thickness 23 mm

**CCA48:** like CCA23 but th. 48 mm

### Aeraulic specifications and price list

Type	Dimensions mm	Max flow m³/h	Initial Δpt Pa	Price list €
CCA23	500x500	500	100	72
CCA48	500x500	500	200	102
FCAD 30	288x593x292	1600	100	354
FCAD 32	593x593x292	3200	100	510

Delivery: 2 weeks

**FCAD:** dihedral activated carbon panels

- non-toxic plastic frame, incinerable
- granulated carbon in pleated synthetic fibre 400gr / m2
- F7 efficiency

## Plate with activated carbon cartridges

PCA



### Description

- PCA:** plate fitted with activated carbon cartridges
- frame in sturdy galvanised steel sheet
  - activated carbon cartridges with single neoprene sealing gaskets, height 400 mm
  - maximum working temperature +60°C
  - maximum relative humidity 70%

**PCA6:** plate with 6 cartridges

**PCA9:** plate with 9 cartridges

**PCA19:** plate with 16 cartridges

### Aeraulic specifications and price list

Type	L x H x D mm	Max flow m³/h	Initial Δpt Pa	Price list €
PCA6	600x400x400	1700	140	715
PCA9	600x600x400	2500	140	1100
PCA16	800x800x400	4500	140	1800

Delivery: 2 weeks